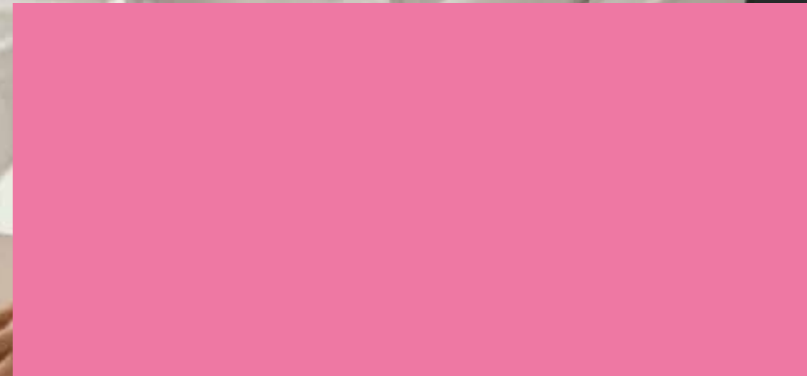









REDUNDANCY SUPPORT FOR INDIVIDUALS

(See separate Business Support listing for Employer Support)



Service		Description	Eligibility	Contact	Where is it available			
					Bristol	BANES	S. Glos	N. Somerset
National Careers Service (NCS)		Standard delivery service via 1:1 support, providing information, advice and guidance via qualified careers advisers to help customers make decisions on learning, training and career opportunities. Currently offering telephone guidance sessions and webinars including support for those who have been made redundant or are on furlough.	19+ (18 and NEET also eligible). Includes service for those who are on furlough or who have been made redundant due to Covid.	www.adviza.org.uk/services/national-careers-service	●	●	●	●
Skills Support for Redundancy (SSR)		Skills training for those 'at risk' or redundancy or those made redundant in last 3 months.	Aged 16+ At risk of redundancy . Been made redundant in last 3 months	www.serco-ese.com/skills-support-for-the-workforce/SSR	●	●	●	●
Redundancy Support Service for Apprentices (ReSSA)		Free advice, find another apprenticeship opportunity, and access local and national support services offering financial, health and wellbeing, legal and careers advice.	Aged 18+ For apprentices made redundant by an employer due to Covid-19	engage.apprenticeships.gov.uk/redundancy-apprentice	●	●	●	
Future Bright		Career progression - coaching training and support including those who income and work has been affected by COVID	Aged 19+, in paid work receiving benefits or tax credits, made redundant or at risk of redundancy, low income, reduced hours, self-employed and/or on furlough.	www.westofengland-ca.gov.uk/future-bright/	●	●	●	●
Job Entry Targeted Support (JETS)		Separate to main WHP provision. Aimed at providing early access to labour market support for those made unemployed due to Covid-19. Support includes identifying opportunities, supporting interview training, addressing anxieties around Covid, signposting to further support etc.	Aged 18+ Universal Credit (UC) All Work Related Requirements (AWRR) group and New Style Jobseekers Allowance claimants who have been unemployed and in receipt of benefit for at least 13 weeks (periods of furlough do not count towards this 13 weeks)	www.seetec.co.uk	●	●	●	●
Job Finding Support (JFS)		12 month programme Jan 2021-Jan 2022 Support for those recently made unemployed (up to 13 weeks) to re-enter employment quickly. 4 hours of 1-2-1 tailored digital support plus an online group session. Development of a Job Finding Action Plan (JFAP) and personalised CV.	18+ and unemployed for less than 13 weeks and are claiming benefits	https://jobhelp.campaign.gov.uk/job-finding-support-if-youre-out-of-work/	●	●	●	●

Service	Description	Eligibility	Contact	Where is it available			
				Bristol	BANES	S. Glos	N. Somerset
Opportunity North Somerset 	Opportunity North Somerset is open to all North Somerset residents (no restrictions) to help identify and outline a personalised employment and skills pathway, acting as a single point of access to find out more about: career development, youth opportunities, digital service access, apprenticeship and work experience, business start-up guidance and wellbeing support services. This support is available remotely and through Employment & Skills Hubs based in library spaces across North Somerset.		https://innorthsomerset.co.uk/skills-support/opportunitynorthsomerset/				●

Please note that the above list is a summary of key services available in the West of England. It is not intended to be a full list of all services, websites and information available within the region. Professionals delivering the services listed above will also be able to signpost to additional support where relevant and applicable.

These guides bring together the local, regional and national skills, training and employment services available to residents and businesses in the West of England.

The West of England Combined Authority has produced similar guides for the following areas::

- Careers Advice, Guidance, Coaching and Support Services for Individuals;
- Career Platforms and Skills Information Portals (Aged 11-18 and 18+);
- Employability, Job Search, CV and Interview Preparation and Gaining Employment;
- Traineeships, Kickstart, T-Levels and Apprenticeships;
- Upskilling, Reskilling and Progression within Work;
- Redundancy Support for Individuals; and
- Wellbeing, Mental Health, Neurodiversity and SEND and Individualised Support.

For further information or to notify us of any service, training and/or online tool to be included in future listings, please email skills@westofengland-ca.gov.uk

The organisations shown in the table are divided into the following categories:

 **Service**
 **Online tool**
 **Training**

