

LABOUR MARKET INTELLIGENCE PACK

DECEMBER 2020

Summary

The December 2020 LMI pack has been condensed, covering the key indicators that changed within the month.

This section summarises results from the rest of the report.

Unemployment

- **As of November 2020 5.0% of working age population in the West of England were claiming unemployment benefits (37,285 residents).** This is broadly in line with levels seen in October 2020.
- Unemployment remains highest in areas with high unemployment pre-covid.

Furlough

- **As of 31 October 2020, 37,100 West of England employees were on furlough,** representing around 7% of those eligible. Please note this data is the most recent available but is at an earlier date than the estimation above for the UK.

Job postings

- According to the Burning Glass analysis tool, there were 12,255 unique job postings advertised in the West of England in November 2020, down 14% from September 2020.
- **The most frequently advertised jobs in the 12 months to November 2020 were:** Programmers and software development professionals (737), Nurses (495), Care workers and home carers (331), IT business analysts, architects and system designers (315) and Other administrative occupations (310).

Claimant Count

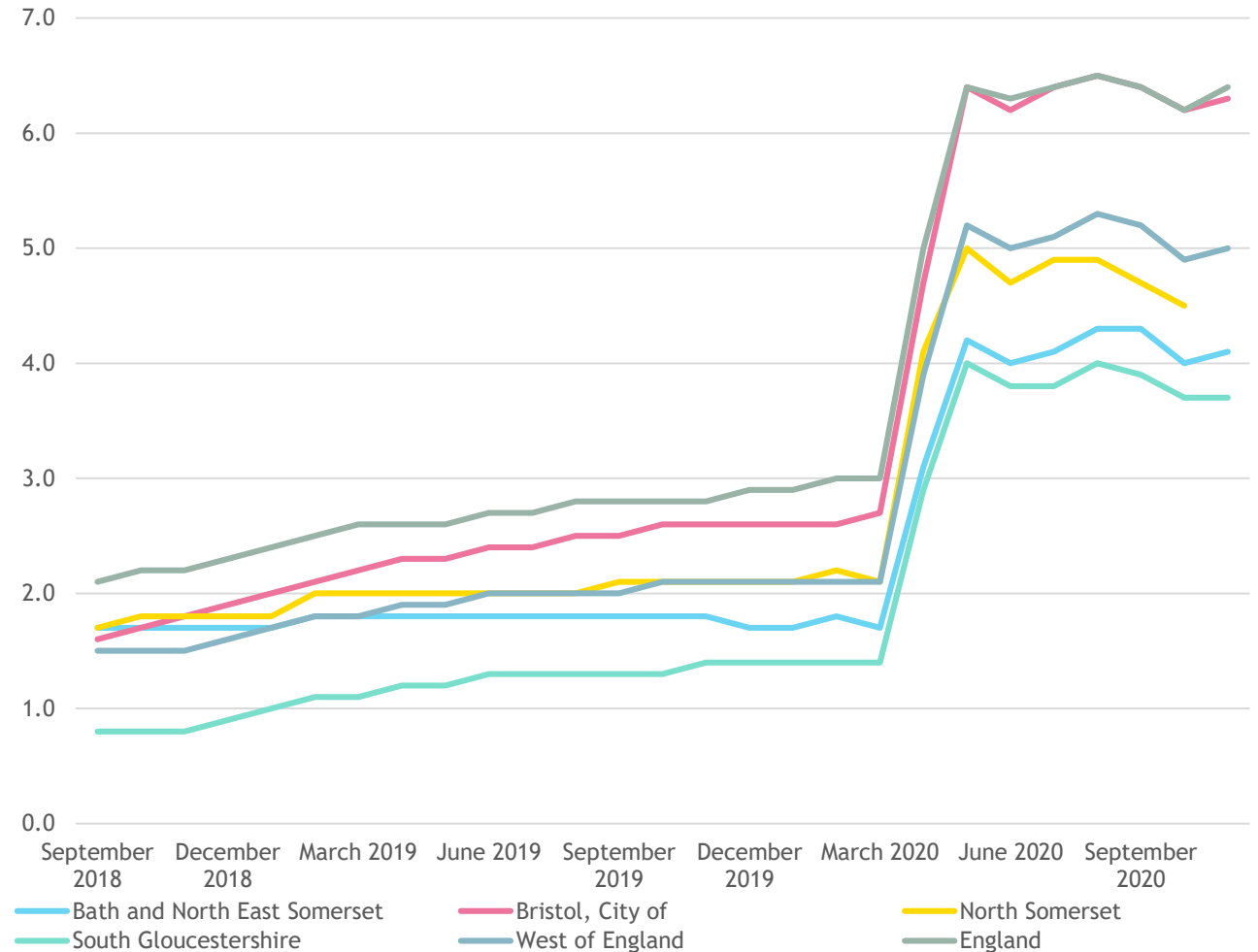
As of November 2020, 5.0% of working age population in the West of England were claiming unemployment benefits (37,285 residents). This is broadly in line with levels seen in October 2020.

There are now 21,510 more claimants in the West of England than there were in February 2020, before the effects of the pandemic hit.

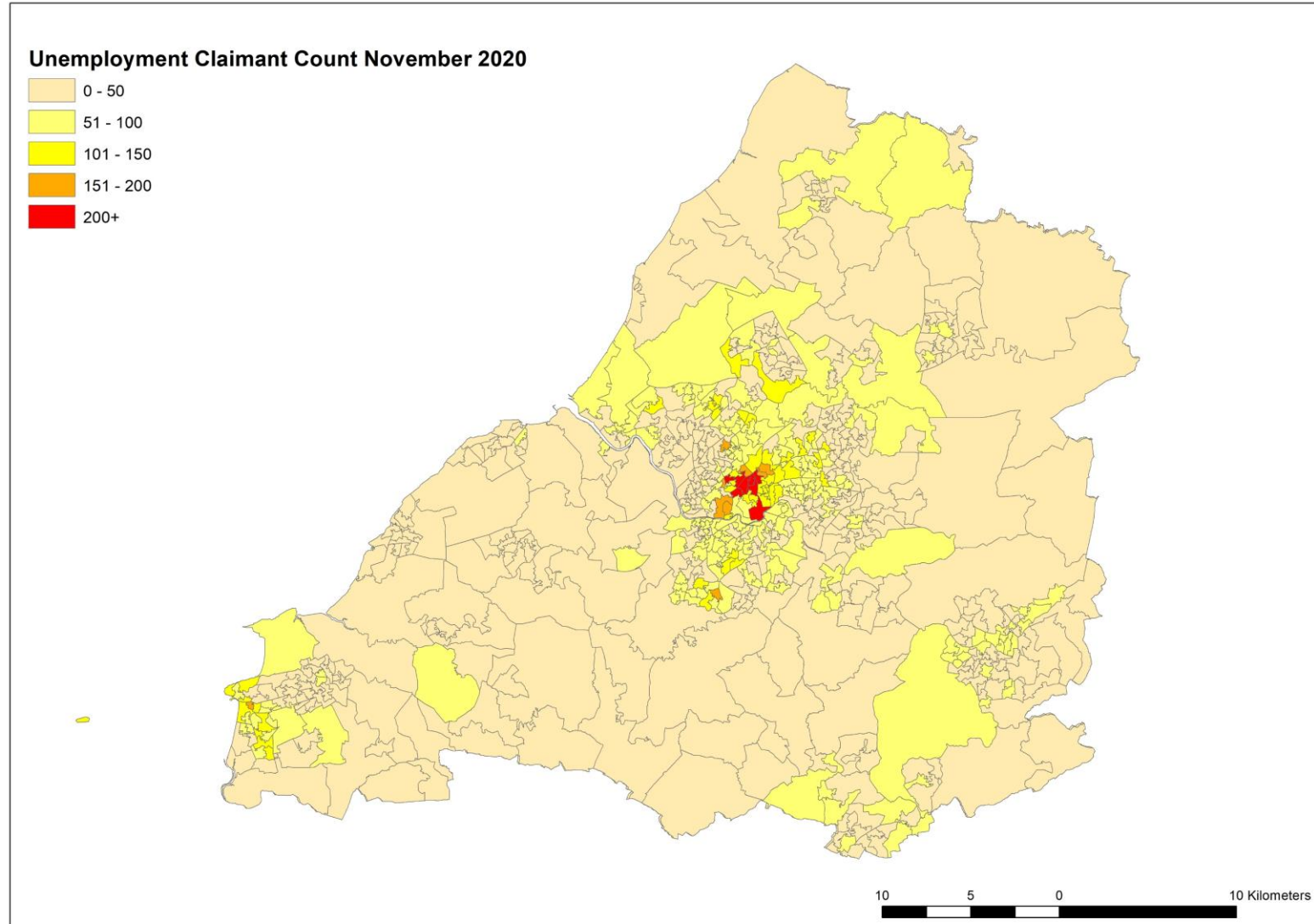
The rate in the West of England remains below the national rate of 6.4% for November 2020, however the claimant rate in Bristol matches the national rate.

November 2020	Count	% of working age
B&NES	5,080	4.1
Bristol	19,905	6.3
N.Som	5,690	4.6
S.Glos	6,610	3.7
West of England	37,285	5.0
England	2,248,430	6.4

Percentage of Working Age Residents Claiming Unemployment Related Benefits



Unemployment remains highest in areas with high unemployment pre-covid



Furlough and Self-employment Income Support Schemes

The second lockdown appears to have had a smaller effect than the first: 15.1% of the UK workforce were estimated to be on furlough between 2-15 November, compared with 25-30% during the spring. This was an increase from 9% in the previous survey, reflecting the change in conditions. (These figures are estimated by the ONS Business Impact of Coronavirus Survey, rather than reflecting the final totals).

As of 31 October 2020, 37,100 West of England employees were on furlough, representing around 7% of those eligible. Please note this data is the most recent available but is at an earlier date than the estimation above for the UK.

As of 13 December 2020, a total of 9.9m people in the UK have been furloughed at some point, by 1.2m employers, with claims amounting to £46.4bn.

As of 31 October 2020, 83,900 claims have been made on the Self-Employment Income Support Scheme (SEISS) by West of England residents, amounting to £236.2m. This includes the first and second tranches of the scheme only.

As of 13 December 2020, in the UK there were a total of 2.7m claims for the first tranche of SEISS, at a total value of £7.8bn, 2.4m claims for the second tranche, at a total value of £5.9bn and 1.7m claims for the third tranche, at a total value of £4.8bn.

- Recent Government analysis estimates that 90% of employees who left the CJRS in the UK between April and July this year were still on their original payroll in August. The below table shows the percentage of employees remaining on their original payroll for different sectors in the UK.

Sector	Percentage (%)
Agriculture, forestry and fishing	90
Mining and quarrying	90
Manufacturing	93
Energy production and supply	93
Water supply, sewerage and waste	91
Construction	93
Wholesale and retail; repair of motor vehicles	92
Transportation and storage	92
Accommodation and food services	85
Information and communication	87
Finance and insurance	88
Real estate	92
Professional, scientific and technical	89
Administrative and support services	85
Public administration and defence; social security	97
Education	90
Health and social work	90
Arts, entertainment and recreation	88
Other service activities	84

Job postings

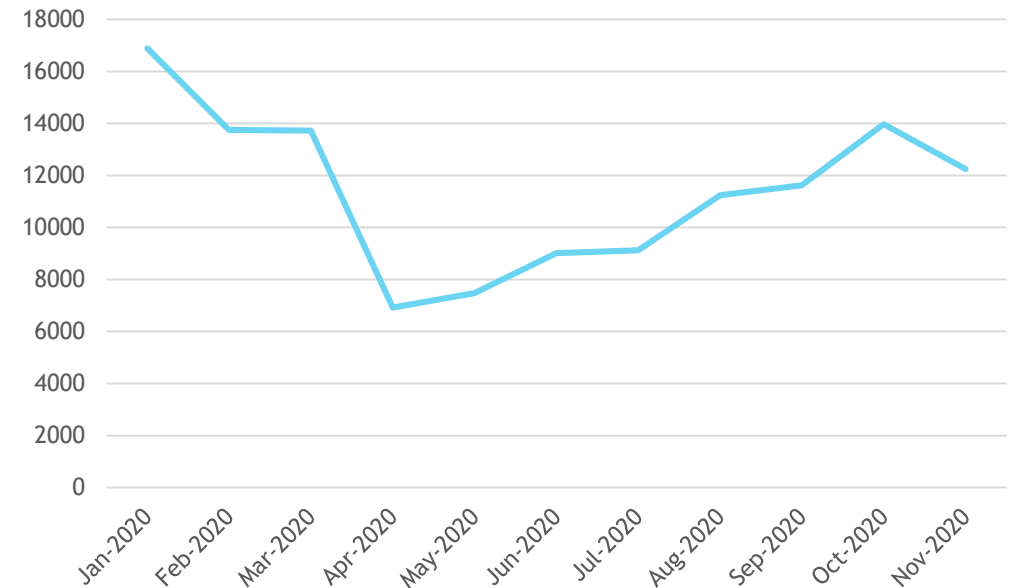
According to the Burning Glass analysis tool, there were 12,255 unique job postings advertised in the West of England in November 2020, down 14% from September 2020 suggesting recovery in terms of available jobs. This is broadly similar to the levels seen before the pandemic.

The impact of changes in number of jobs available as a result of lockdown measures and social distancing became visible in April, with significantly fewer jobs advertised. This rose between April and October, but dipped again in November, in line with the second national lockdown.

Comparing the type of jobs advertised by industry, the recovery has in part been driven by increases in the number of postings in human health and social care which is up on its February posting level. Moderate recoveries have also been seen in most sectors, although many are not yet at pre-pandemic levels, most notably Accommodation and Food, and Administrative and Support Service Activities.

Job postings levels and associated analytics are highly sensitive to the web-scraping tool used. Sensitivity analysis has been undertaken and, although levels differ between tools, trends over time are similar - analysing trends rather than totals is therefore advised.

Job Postings Over Time (West of England)



Top Occupations in September 2020 (West of England)

- Programmers and software development professionals (737)
- Nurses (495)
- Care workers and home carers (331)
- IT business analysts, architects and system designers (315)
- Other administrative occupations (310)